



# San Bernardo Corridor

CITY OF LAREDO



**SAN BERNARDO AVENUE CORRIDOR**  
**A place where people want to shop, live and work.**

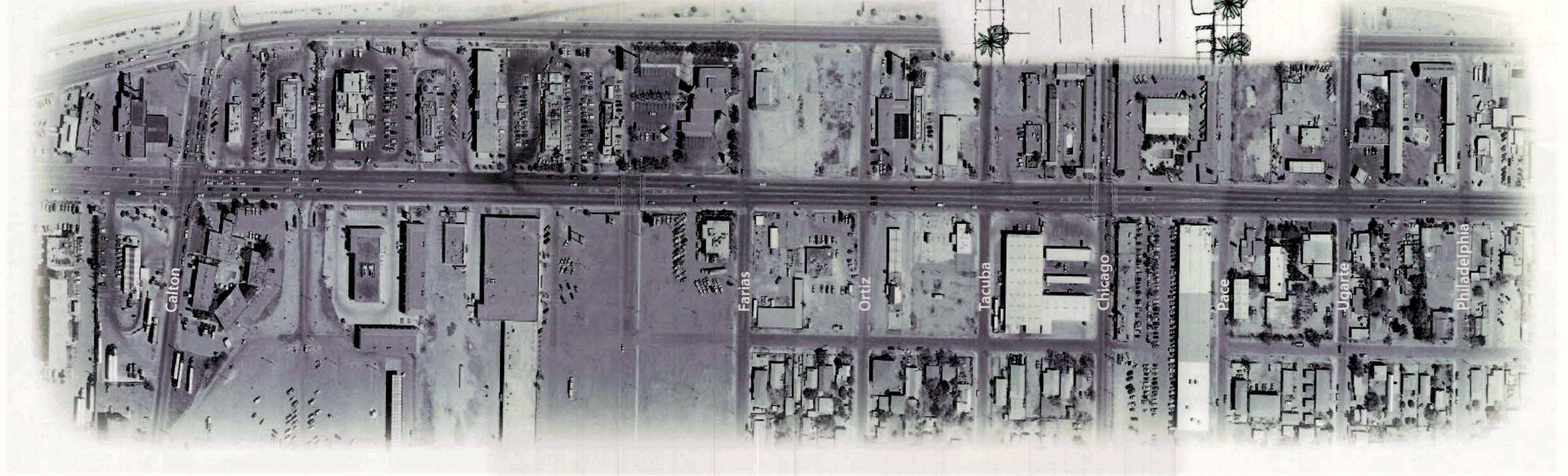
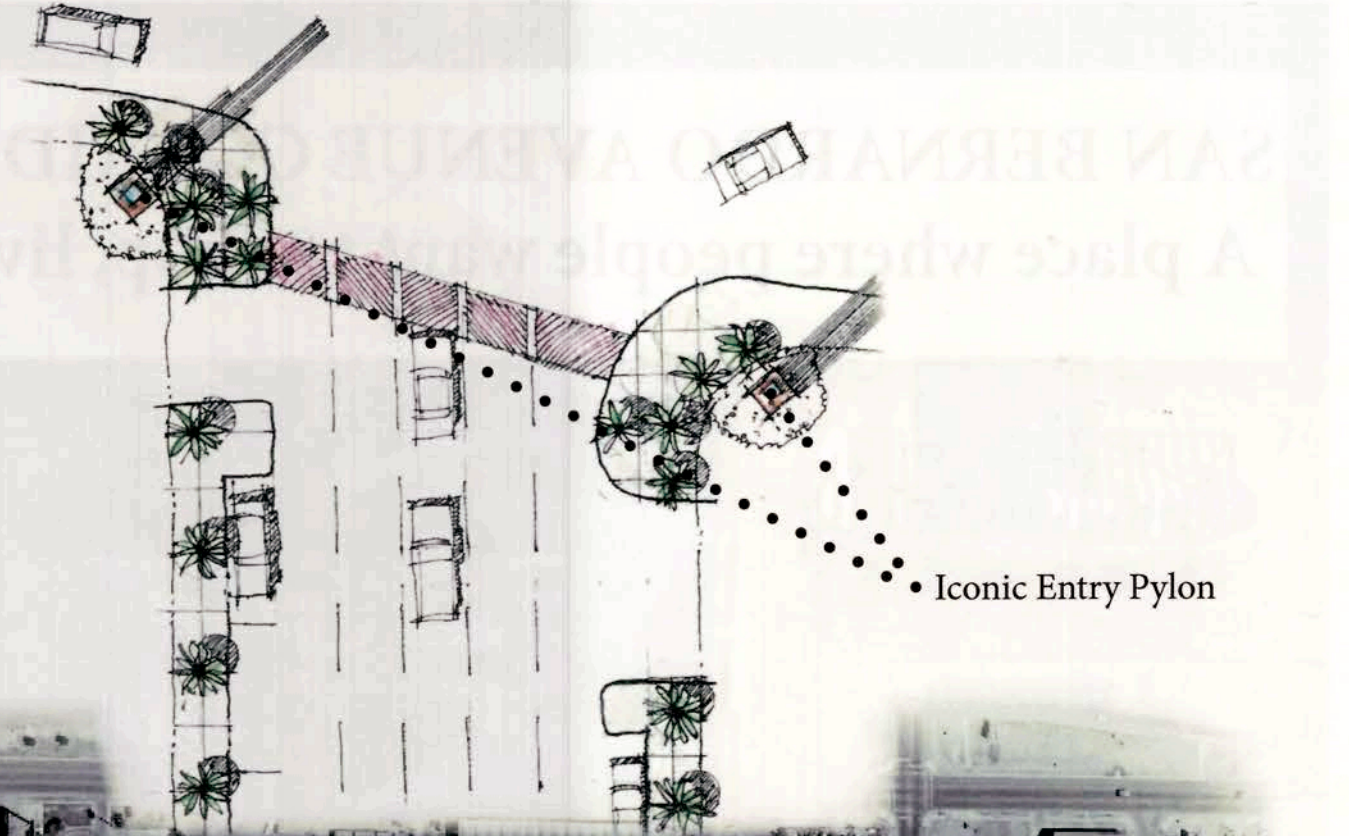




# SAN BERNARDO AVENUE

Along the northern end of San Bernardo, medians and sidewalks can be wider and greener, taking advantage of the wide right-of-way. Larger shade trees such as Live Oaks will have room to grow and provide much-needed shade for **shopping, strolling, and sidewalk cafes.**

- Use vertical monuments at major intersections to help identify that San Bernardo is SPECIAL
- Pair deep shade canopies and deep sidewalks with palm trees and Live Oaks to offer cool sidewalks and a better pedestrian experience





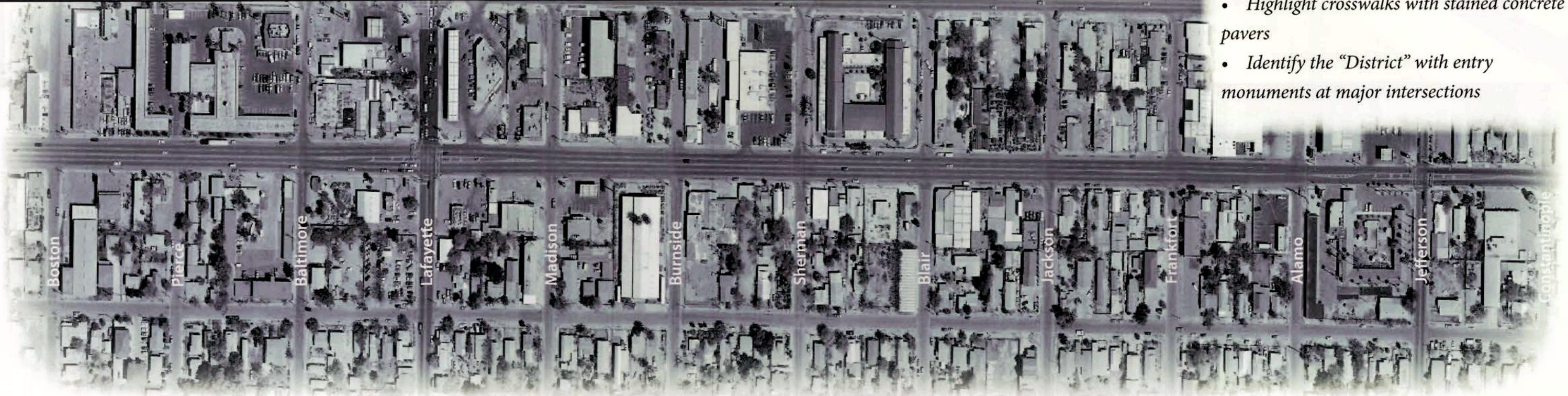
# SAN BERNARDO AVENUE



The plan calls for transportation improvements as well as development regulations, but the primary focus is on **STREETScape**. An improved pedestrian experience will have a positive impact on commerce and leisure activity along San Bernardo.

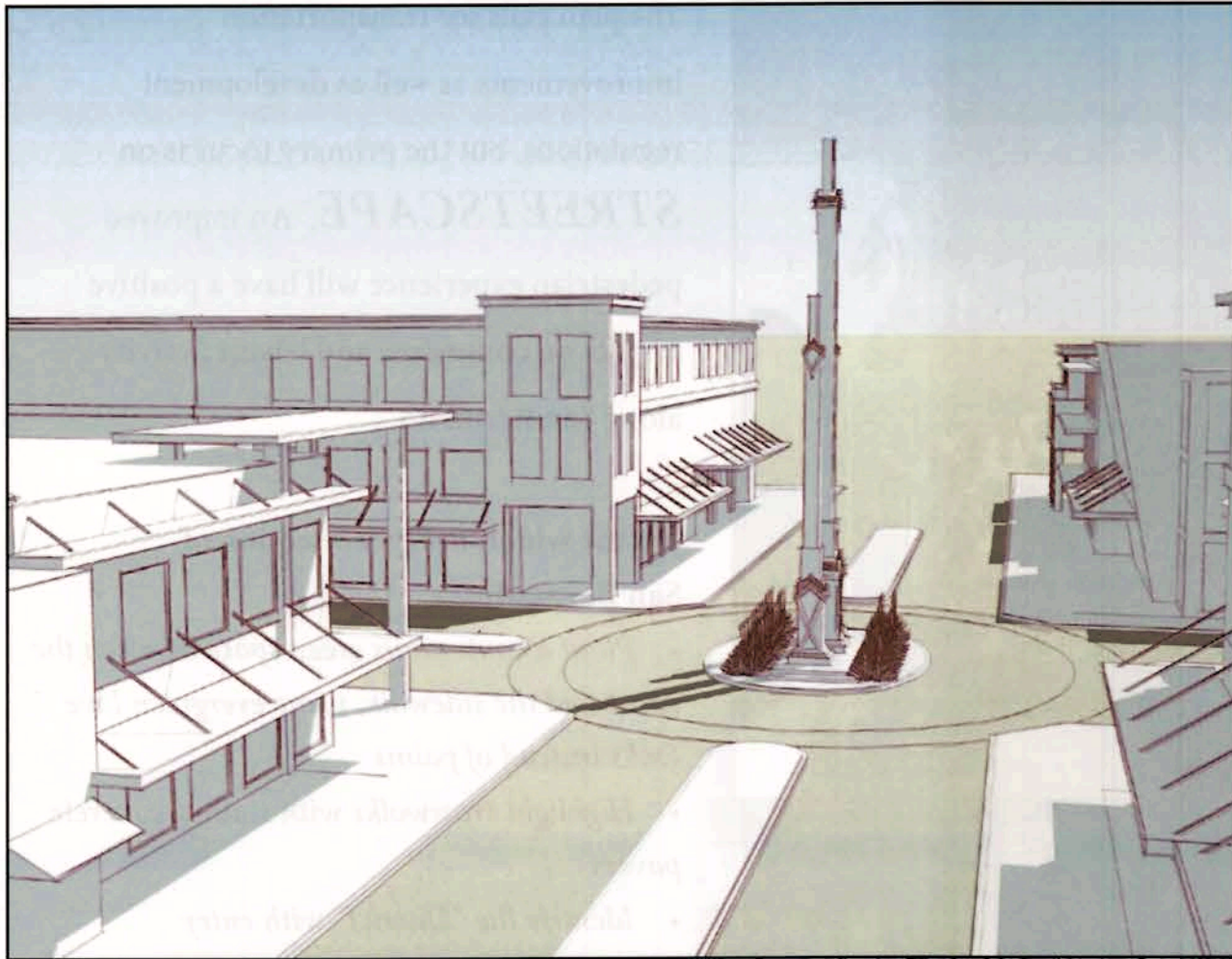
## On the wider, northern section of San Bernardo:

- *Plant a continuous green space between the street and the sidewalk, using evergreen Live Oaks instead of palms*
- *Highlight crosswalks with stained concrete pavers*
- *Identify the "District" with entry monuments at major intersections*





# SAN BERNARDO AVENUE

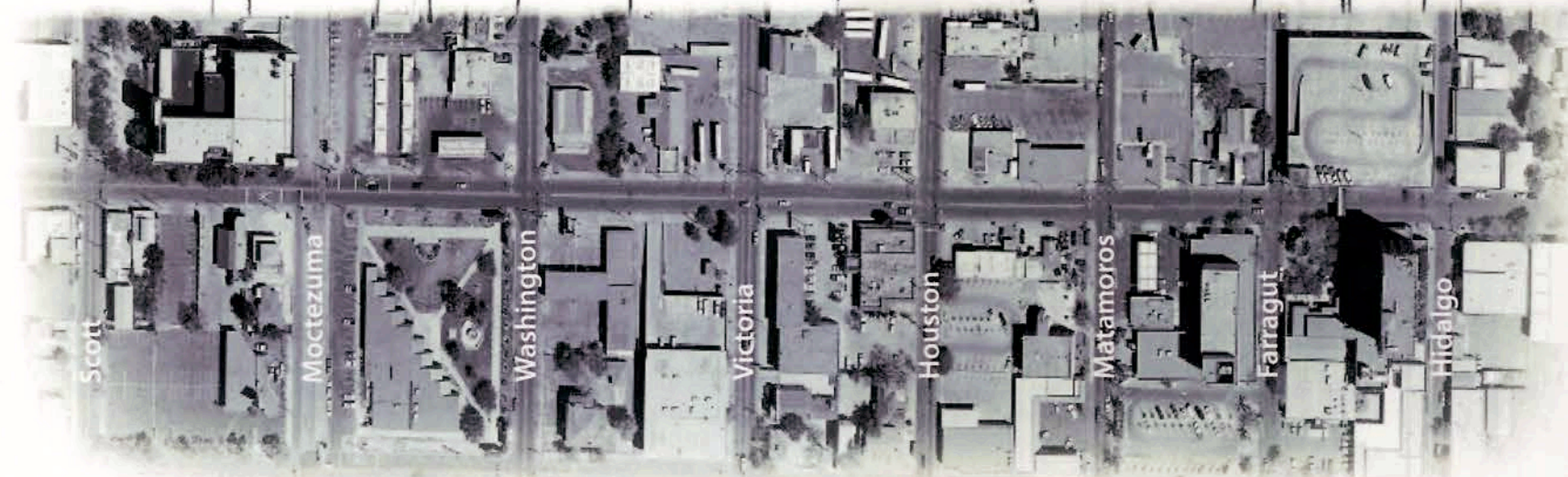
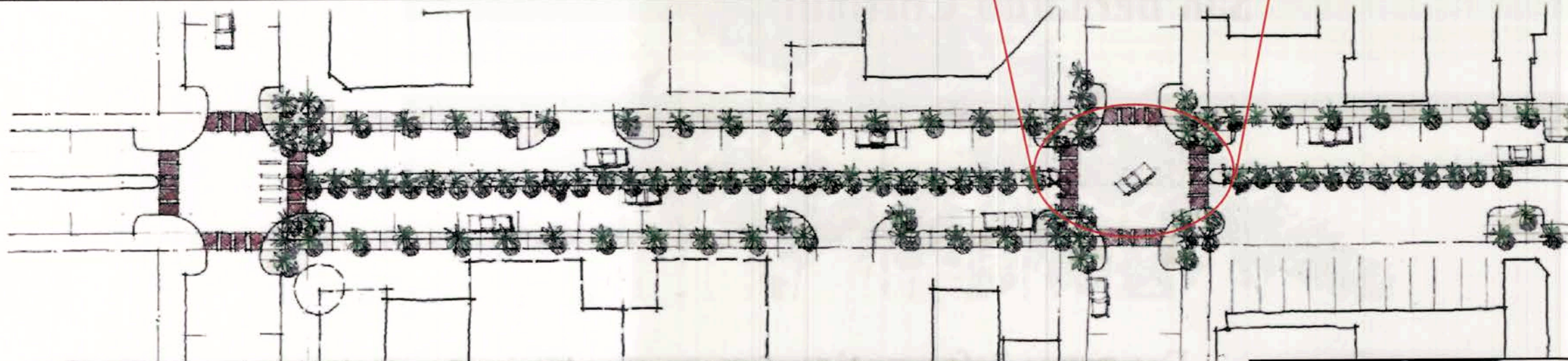
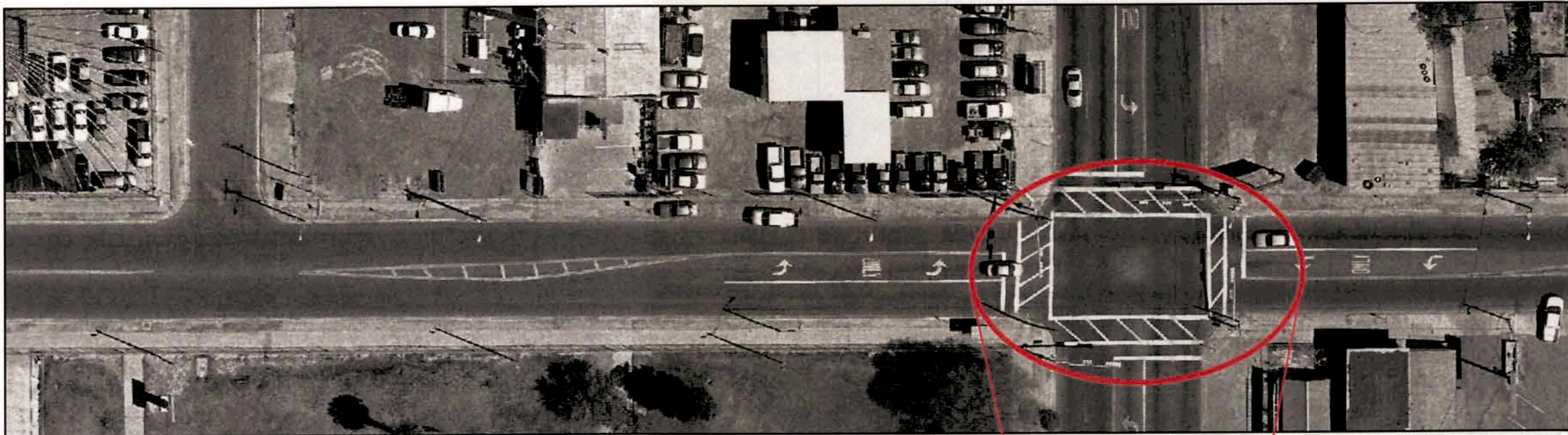


*High quality street furnishings will help improve the pedestrian experience along San Bernardo*





# SAN BERNARDO AVENUE



**On the most urban, southern section of San Bernardo:**

- *Replace the turning lane with a tree-lined median.*
- *Require new buildings to be built up to the street.*
- *Don't allow parking lots fronting the street.*
- *Provide continuous, shaded sidewalks and a consistent pattern of iconic palm trees.*





## **San Bernardo Corridor**

**CITY OF LAREDO**

**For more information  
call the Laredo MPO at  
(956) 794-1613**